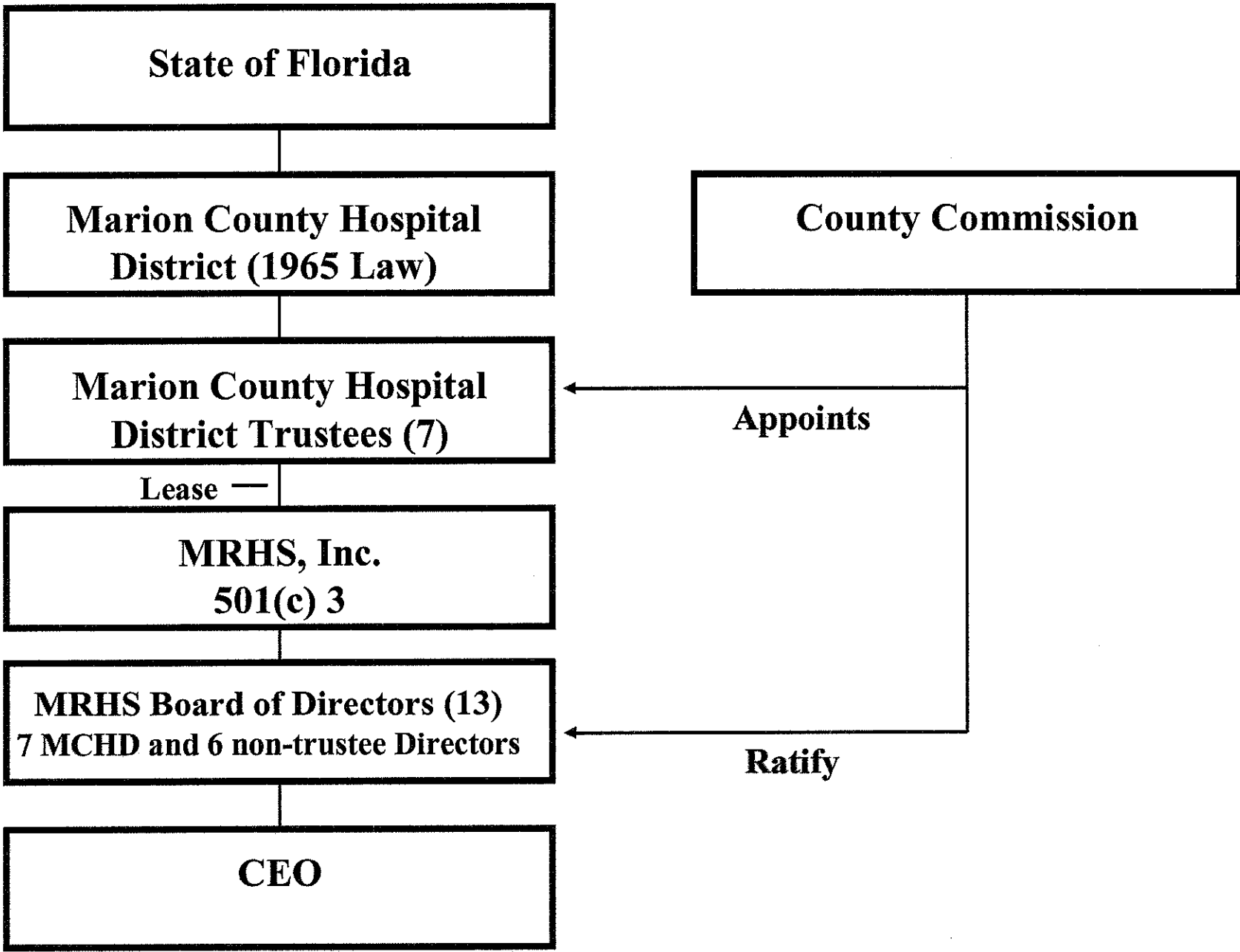


Florida Commission on Review of Taxpayer Funded Hospital Districts

Meeting Date: July 20, 2011

Public Comment and Attachment Presented By:

Stephen A. Purves
President & CEO
Munroe Regional Medical Center
Ocala, Marion County, Florida



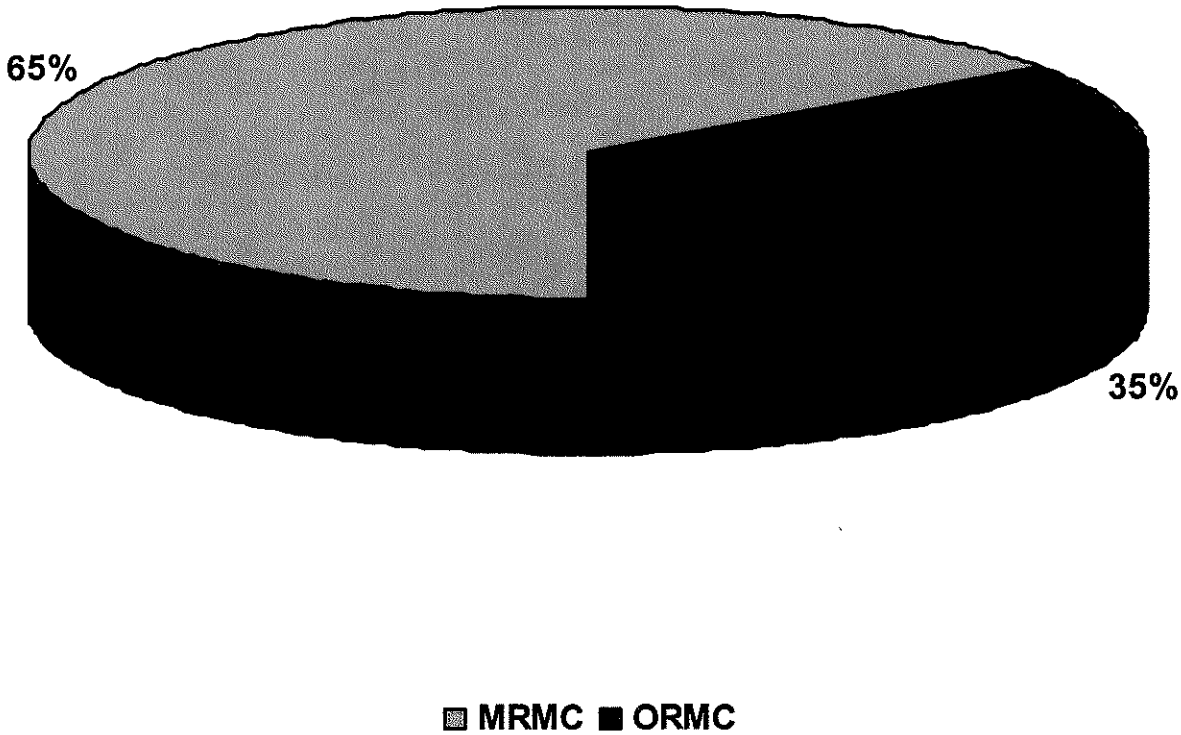
HOSPITAL	County	Own.	Acute Care Beds	Specialty Beds	Discharges		Occupancy		Percent of Patient Charges					
					2009	Rank	2010	Rank	Bad Debt		Medicaid		Charity	
					2009	Rank	2009	Rank	2009	Rank	2009	Rank	2009	Rank
BAPTIST HOSPITAL	ESCAMBIA	NFP	469	90	20,764	36	42.93%	124	5.9%	32	11.1%	100	2.0%	108
SACRED HEART HOSPITAL	ESCAMBIA	NFP	411	55	29,380	16	70.37%	32	4.4%	65	16.1%	50	2.4%	94
WEST FLORIDA HOSPITAL	ESCAMBIA	FP	400	131	13,283	67	34.10%	149	2.9%	110	8.5%	130	0.8%	146
FORT WALTON BEACH MEDICAL CENTER	OKALOOSA	FP	179	78	13,236	68	71.82%	26	3.1%	104	11.9%	90	0.8%	150
NORTH OKALOOSA MEDICAL CENTER	OKALOOSA	FP	110	0	6,900	118	55.51%	86	2.8%	116	14.1%	62	2.8%	83
TWIN CITIES HOSPITAL	OKALOOSA	FP	65	0	2,034	156	30.37%	158	4.2%	71	7.5%	141	0.4%	163
JAY HOSPITAL	SANTA ROSA	NFP	55	0	1,043	160	41.10%	129	5.9%	33	17.4%	40	4.9%	36
SANTA ROSA MEDICAL CENTER	SANTA ROSA	FP	129	0	4,250	147	29.77%	159	5.0%	48	16.7%	42	0.9%	145
HEALTHMARK REGIONAL MEDICAL CENTER	WALTON	FP	50	0	1,037	161	23.62%	167	16.7%	3	19.2%	22	1.5%	123
SACRED HEART HOSPITAL ON THE EMERALD COAST	WALTON	NFP	58	0	4,726	138	59.32%	73	5.5%	38	8.9%	123	1.4%	129
BAY MEDICAL CENTER	BAY	G	323	90	15,999	54	61.25%	61	5.6%	36	12.9%	78	6.6%	22
GULF COAST MEDICAL CENTER	BAY	FP	166	10	13,063	71	57.67%	82	2.9%	108	15.9%	51	0.8%	149
CALHOUN LIBERTY HOSPITAL	CALHOUN	NFP	25	0	394	169	35.90%	146	12.0%	9	15.5%	53	0.7%	151
GEORGE E. WEEMS MEMORIAL HOSPITAL	FRANKLIN	G	25	0	286	170	9.51%	171	18.6%	2	14.0%	63	7.0%	20
DOCTOR'S MEMORIAL HOSPITAL - BONIFAY	HOLMES	G	20	0	1,278	157	63.93%	53	2.6%	124	22.4%	14	7.0%	19
CAMPBELLTON-GRACEVILLE HOSPITAL	JACKSON	G	25	0	223	171	36.05%	145	5.1%	45	11.3%	97	0.6%	155
JACKSON HOSPITAL	JACKSON	G	100	0	3,914	149	39.03%	139	5.7%	34	16.1%	49	4.0%	53
CAPITAL REGIONAL MEDICAL CENTER	LEON	FP	198	0	12,896	74	71.58%	29	4.9%	50	14.4%	58	1.0%	143
TALLAHASSEE MEMORIAL HOSPITAL	LEON	NFP	567	203	27,189	19	45.85%	115	5.0%	47	14.4%	59	3.3%	74
MADISON COUNTY MEMORIAL HOSPITAL	MADISON	NFP	25	0	477	168	14.08%	169	13.0%	6	17.9%	35	3.0%	79
DOCTOR'S MEMORIAL HOSPITAL	TAYLOR	NFP	48	0	1,247	158	28.51%	160	12.8%	7	18.5%	27	3.2%	78
NORTHWEST FLORIDA COMMUNITY HOSPITAL	WASHINGTON	FP	25	34	565	167	27.78%	161	4.6%	59	19.2%	21	5.8%	27
NORTH FLORIDA REGIONAL MEDICAL CENTER	ALACHUA	FP	325	0	26,750	21	86.21%	2	3.2%	99	8.3%	131	1.0%	140
SHANDS HOSPITAL AT THE UNIVERSITY OF FLORIDA	ALACHUA	NFP	790	230	37,638	10	71.34%	30	3.2%	97	18.7%	26	6.0%	25
SHANDS STARKE REGIONAL MEDICAL CENTER	BRADFORD	FP	25	24	1,104	159	41.04%	130	9.3%	14	18.5%	28	5.7%	28
CITRUS MEMORIAL HOSPITAL	CITRUS	NFP	198	0	10,793	89	59.00%	75	3.1%	102	6.5%	145	2.5%	90
SEVEN RIVERS REGIONAL MEDICAL CENTER	CITRUS	FP	112	16	7,231	114	63.82%	54	1.9%	151	11.6%	95	0.4%	162
LAKE CITY MEDICAL CENTER	COLUMBIA	FP	67	0	4,349	146	79.64%	4	3.8%	79	11.2%	99	0.5%	159
SHANDS LAKE SHORE REGIONAL MEDICAL CENTER	COLUMBIA	FP	99	0	4,860	133	47.76%	110	3.2%	101	23.5%	11	12.2%	6
BROOKSVILLE REGIONAL HOSPITAL	HERNANDO	FP	234	10	13,295	66	60.65%	65	2.4%	133	20.4%	17	3.4%	69
OAK HILL HOSPITAL	HERNANDO	FP	214	0	13,718	64	78.06%	8	1.8%	159	5.1%	157	1.4%	128
FLORIDA HOSPITAL-WATERMAN	LAKE	NFP	204	0	14,255	60	75.62%	15	4.7%	54	10.4%	109	2.5%	91
LEESBURG REGIONAL MEDICAL CENTER	LAKE	NFP	294	0	18,857	42	72.64%	24	2.5%	130	6.1%	148	2.4%	96
SOUTH LAKE HOSPITAL	LAKE	NFP	104	0	7,854	113	78.95%	6	2.8%	112	8.9%	122	5.9%	26
TRI COUNTY HOSPITAL - WILLISTON	LEVY	FP	40	0	646	164	10.97%	170	20.1%	1	24.6%	8	4.4%	41
MUNROE REGIONAL MEDICAL CENTER	MARION	NFP	421	0	26,325	23	67.20%	44	4.2%	74	11.5%	96	1.7%	116
OCALA REGIONAL MEDICAL CENTER	MARION	FP	200	65	10,865	88	63.69%	55	3.6%	85	10.3%	111	1.5%	122
PUTNAM COMMUNITY MEDICAL CENTER	PUTNAM	FP	131	10	5,802	127	52.47%	93	8.8%	17	18.4%	29	1.3%	132

**Marion County Hospital Comparison
 Medicaid, Charity & Bad Debt
 % of Patient Charges
 2009**

	MRMC	ORMC
Bad Debt	4.2%	3.6%
Medicaid	11.5%	10.3%
Charity	<u>1.7%</u>	<u>1.5%</u>
	<u>17.4%</u>	<u>15.4%</u>

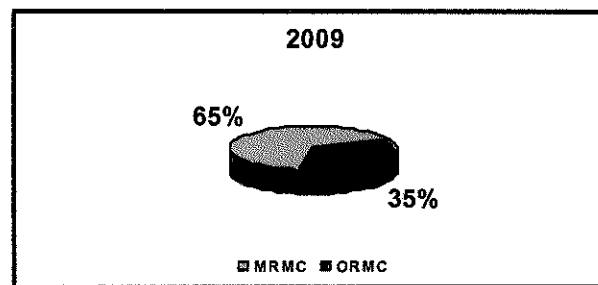
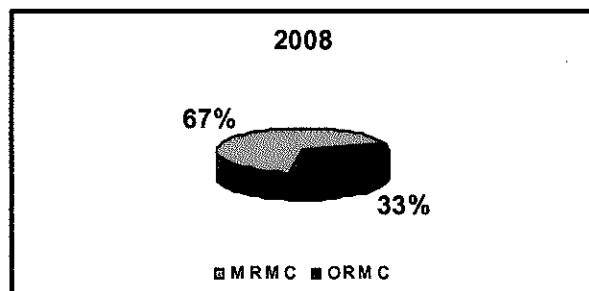
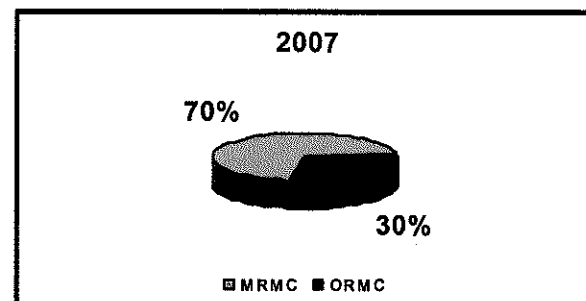
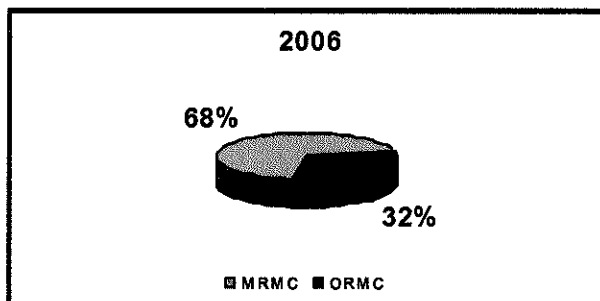
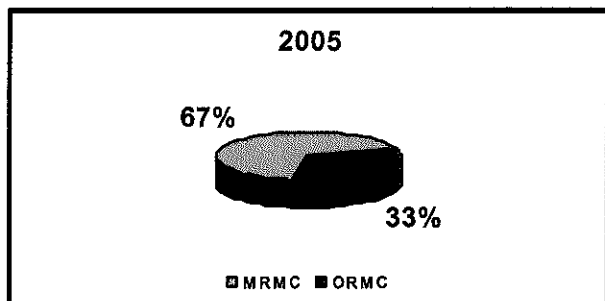
Source: AHCA

**Marion County Hospital Days
Medicaid, Charity & Bad Debt Days
2009**



Source: AHCA & AHCA Methodology

Marion County Hospitals Medicaid & Charity Days 2005 - 2009



Local Tax Support Received for Indigent Care:

	2005	2006	2007	2008	2009
MRMC	\$0	\$0	\$0	\$0	\$0
HCA/ORMC	\$1,000,000	\$1,000,000	\$1,000,000	\$0	\$0

Source: AHCA, Marion County

INDIGENT CARE

DEPT	ACCOUNT		1995-1998 per yr	1999	2000	2001	2002	2003	2004
1025	531411	* INDIGENT CARE - MARION COMMUNITY HOSPITAL	1,000,000.00	1,000,000.00	1,000,000.00	1,000,000.00	950,000.00	950,000.00	
1025	581316	* MARION COMMUNITY HOSPITAL(AID TO AHCA)							**2,950,000.00
3350	581316	EMSA (AID TO AHCA)							
5110	581316	MARION COUNTY HEALTH UNIT(AID TO AHCA)		1,031,766.00	1,171,446.00	1,284,579.00	1,318,334.00	1,356,576.00	1,350,000.00
5130	581316	THE CENTERS (AID TO AHCA)							
5130	582101	THE CENTERS		735,822.00	757,897.00	795,791.00	795,791.00	875,370.00	919,135.00
5330	581316	HEART OF FLORIDA (AID TO AHCA)							

INDIGENT CARE

DEPT	ACCOUNT		2005	2006	2007	2008	2009	2010	2011
1025	531411	* INDIGENT CARE - MARION COMMUNITY HOSPITAL							
1025	581316	* MARION COMMUNITY HOSPITAL(AID TO AHCA)	1,000,000.00	1,000,000.00	1,000,000.00				
3350	581316	EMSA (AID TO AHCA)	2,773,415.00	2,773,415.00	3,576,892.00	3,576,892.00			
5110	581316	MARION COUNTY HEALTH UNIT(AID TO AHCA)	1,600,382.00		2,456,670.00	2,615,585.00	2,363,453.00	2,200,349.00	1,836,676.00
5130	581316	THE CENTERS (AID TO AHCA)		1,061,601.00	1,061,601.00	1,084,377.00	1,089,766.00	1,143,758.00	1,143,758.00
5130	582101	THE CENTERS	919,135.00						
5330	581316	HEART OF FLORIDA (AID TO AHCA)					350,000.00	380,000.00	380,000.00

* MARION COMMUNITY HOSPITAL DBA OCALA REGIONAL MEDICAL CENTER
 ** \$900,000.00 ORMC AND \$2,050,000.00 EMSA BOTH CAME OUT OF 1025-581316

INDIGENT CARE FUNDING PROVIDED TO MARION COMMUNITY HOSPITAL 1995 - 2007 - \$12,800,000.00

Agency for Healthcare Administration
Hospital Groupings - Group 6
2009 Actual Data

			County	Standard CAA Rank	Standard Cost per Adj. Adm.
100th Percentile	10-0231	West Florida Hospital	Escambia	1	6,794
	10-0061	Mercy Hospital	Miami-Dade	2	6,764
	10-0248	Largo Medical Ctr.	Pinellas	3	6,006
	10-0246	Lawnwood Regional Med Ctr.	Saint Lucie	4	6,000
	10-0044	Martin Memorial Medical Ctr.	Martin	5	5,930
	10-0084	Leesburg Regional Medical Ctr.	Lake	6	5,769
75th Percentile	10-0212	Ocala Regional Medical Ctr.	Marion	7	5,743
	10-0052	Winter Haven Hospital	Polk	8	5,741
	10-0213	Blake Medical Center	Manatee	9	5,682
	10-0256	Regional Medical Ctr Bayonet Point	Pasco	10	5,657
	10-0023	Citrus Memorial Hospital	Citrus	11	5,644
	10-0068	Florida Hospital Oceanside	Volusia	12	5,621
50th Percentile	10-0236	Fawcett Memorial Hospital	Charlotte	13	5,615
	10-0223	Fort Walton Beach Medical Ctr.	Okaloosa	14	5,479
	10-0035	Manatee Memorial Hospital	Manatee	15	5,468
	10-0204	North Fla. Regional Medical Ctr.	Alachua	16	5,438
	10-0093	Baptist Hospital, Inc.	Escambia	17	5,411
	10-0043	Mease Dunedin Hospital	Pinellas	18	5,410
25th Percentile	10-0161	Central Fla. Regional Hospital	Seminole	19	5,317
	10-0047	Charlotte Regional Medical Ctr.	Charlotte	20	5,309
	10-0264	Oak Hill Hospital	Hernando	21	5,261
	10-0025	Sacred Heart Hospital	Escambia	22	5,077
	10-0062	Munroe Regional Medical Ctr.	Marion	23	4,991
	10-0026	Bay Medical Center	Bay	24	4,938
	10-0105	Indian River Medical Ctr.	Indian River	25	4,779

Source: AHCA 2009 Hospital Financial Data Recent MRMC Cost Standings: 2006 Lower 33rd Percentile, 2007 & 2008 Lower 25th Percentile