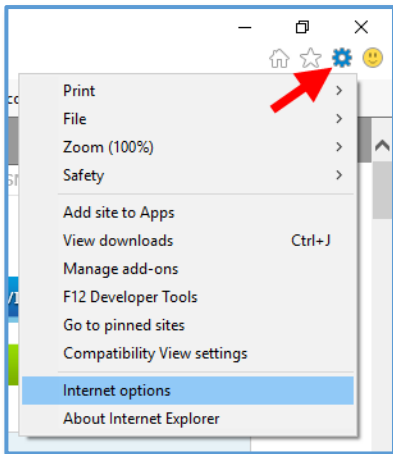


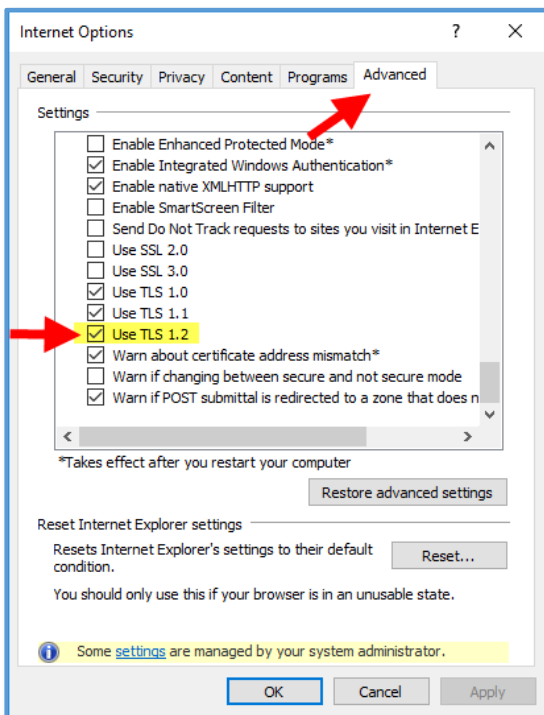
Activating the Security Protocol on Internet Explorer

Internet Explorer version 11 has the new security protocol enabled by default. If, after viewing the matrix attached, your browser is one that is “Disabled by Default”, you can enable the protocol in a few simple steps using Internet Explorer.

1. In the top right corner of your Internet Explorer browser, select the **Settings** icon and select **Internet Options**



2. At the top of the options menu, select the **Advanced** tab
Scroll to the bottom of your settings and select **Use TLS 1.2** if it is not already selected



3. Select **Apply** and **OK**

TLS Browser Support

Browser	Version	Platforms	TLS Protocols			
			TLS 1.0	TLS 1.1	TLS 1.2	
Google Chrome	1-9	Windows (7+) OS X (10.9+) Linux Android (4.1+) iOS (9.0+) Chrome OS	Yes	No	No	
	10-20		Yes	No	No	
	21		Yes	No	No	
	22-25		Yes	Yes	No	
	26-29		Yes	Yes	No	
	30-32		Yes	Yes	Yes	
	33-37		Yes	Yes	Yes	
	38, 39		Yes	Yes	Yes	
	40		Yes	Yes	Yes	
	41, 42		Yes	Yes	Yes	
	43		Yes	Yes	Yes	
	44-47		Yes	Yes	Yes	
	48-50		51	Yes	Yes	Yes
	Google Android OS Browser		Android 1.0, 1.1, 1.5, 1.6, 2.0-2.1, 2.2-2.2.3		Yes	No
Android 2.3-2.3.7, 3.0-3.2.6, 4.0-4.0.4		Yes	No	No		
Android 4.1-4.3.1, 4.4-4.4.4		Yes	No	No		
Android 5.0-5.0.2		Yes	Yes	Yes		
Android 5.1-5.1.1		Yes	Yes	Yes		
Android 6.0-6.0.1		Yes	Yes	Yes		

TLS Browser Support

Browser	Version	Platforms	TLS Protocols			
			TLS 1.0	TLS 1.1	TLS 1.2	
Mozilla Firefox	1	Windows (XP SP2+) OS X (10.6+) Linux Android (2.3,4.0.3+) iOS (8.2+) Firefox OS ESR only for: Windows (XP SP2+) OS X (10.6+) Linux	Yes	No	No	
	1.5		Yes	No	No	
	2		Yes	No	No	
	3-7		Yes	No	No	
	8-10		Yes	No	No	
	ESR 10		Yes	No	No	
	11-14		Yes	No	No	
	15-22		Yes	No	No	
	ESR 17.0-17.0.10		Yes	No	No	
	ESR 17.0.11		Yes	No	No	
	23		Yes	Disabled by default	No	
	24, 25.0.0		Yes	Disabled by default	Disabled by default	
	ESR 24.0-24.1.0		Yes	Disabled by default	Disabled by default	
	25.0.1, 26		Yes	Disabled by default	Disabled by default	
	ESR 24.1.1		Yes	Disabled by default	Disabled by default	
	27-33		Yes	Yes	Yes	
	ESR 31.0-31.2		Yes	Yes	Yes	
	34, 35		Yes	Yes	Yes	
	ESR 31.3-31.7		Yes	Yes	Yes	
	ESR 31.8		Yes	Yes	Yes	
	36-38		Yes	Yes	Yes	
	ESR 38.0		Yes	Yes	Yes	
	ESR 38.1-38.8		Yes	Yes	Yes	
	39-43		Yes	Yes	Yes	
	44-46		ESR 45.2	Yes	Yes	Yes
	ESR 45.0-45.1		47	Yes	Yes	Yes

TLS Browser Support

Browser	Version	Platforms	TLS Protocols			
			TLS 1.0	TLS 1.1	TLS 1.2	
Microsoft Internet Explorer	1.x	Windows 3.1, 95, NT	No	No	No	
	2	Mac OS 7, 8	No	No	No	
	3		No	No	No	
	4, 5		Windows 3.1, 95, 98, NT	Disabled by default	No	No
			Mac OS 7.1, 8, X,			
			Solaris, HP-UX			
	6	Windows 98, ME, NT, 2000	Disabled by default	No	No	
	6	Windows XP	Disabled by default	No	No	
	6	Server 2003	Disabled by default	No	No	
	7, 8	Windows XP	Yes	No	No	
	7, 8	Server 2003	Yes	No	No	
	7, 8	9	Windows Vista	Yes	No	No
			Server 2008			
	8, 9, 10		Windows 7	Yes	Disabled by default	Disabled by default
			Server 2008 R2			
	10	Windows 8	Yes	Disabled by default	Disabled by default	
	10	Server 2012				
11		Windows 7	Yes	Yes	Yes	
		Server 2008 R2				
11		Windows 8.1	Yes	Yes	Yes	
		Server 2012 R2				
Microsoft Edge and (as fallback) Internet Explorer	IE 11	Edge	Windows 10 Server 2016	Yes	Yes	Yes
Microsoft Internet Explorer Mobile	7, 9		Windows Phone 7, 7.5, 7.8	Yes	No	No
	10		Windows Phone 8	Yes	Disabled by default	Disabled by default
	11		Windows Phone 8.1	Yes	Yes	Yes
Microsoft Edge		Edge	Windows 10 Mobile	Yes	Yes	Yes

TLS Browser Support

Browser	Version	Platforms	TLS Protocols			
			TLS 1.0	TLS 1.1	TLS 1.2	
Opera Browser (Opera Mobile) (Webkit and Blink)	14–16	Windows (7+) OS X (10.9+) Linux Android (4.0+)	Yes	Yes	No	
	17–19		Yes	Yes	Yes	
	20–24		Yes	Yes	Yes	
	25, 26		Yes	Yes	Yes	
	27		Yes	Yes	Yes	
	28, 29		Yes	Yes	Yes	
	30		Yes	Yes	Yes	
	31–34		Yes	Yes	Yes	
	35–37		38	Yes	Yes	Yes
Apple Safari	1	Mac OS X 10.2, 10.3	Yes	No	No	
	2–5	Mac OS X 10.4, 10.5, Win XP	Yes	No	No	
	3–5	Vista, Win 7	Yes	No	No	
	4–6	Mac OS X 10.6, 10.7	Yes	No	No	
	6	OS X 10.8	Yes	No	No	
	7	9	OS X 10.9	Yes	Yes	Yes
	8	9	OS X 10.10	Yes	Yes	Yes
	9	OS X 10.11	Yes	Yes	Yes	
Apple Safari (mobile)	3	iPhone OS 1, 2	Yes	No	No	
	4, 5	iPhone OS 3, iOS 4	Yes	No	No	
	5, 6	iOS 5, 6	Yes	Yes	Yes	
	7	iOS 7	Yes	Yes	Yes	
	8	iOS 8	Yes	Yes	Yes	
	9	iOS 9	Yes	Yes	Yes	